



NYKLINE

NYK Line (Australia) Pty Ltd ABN 85 009 721 751 www.nykline.com.au

25th May, 2010

CUSTOMER NOTICE

DP WORLD RAIL REQUESTS via 1-Stop

Dear Valued Customers,

NYK Line wishes to advise that effective Monday 31st May, 2010 all Rail Requests for releasing and tagging at DP World will need to be actioned online through 1-Stop.

This service is now available to be actioned **by the consignees, importers, rail operators & freight forwarders directly online.**

To gain access to the service, please contact the 1-Stop Helpdesk via email helpdesk@1-stop.biz and advise them you would like access to the Rail Tagging and Release Service.

NYK Line will also need to approve this access to 1-stop, so we would ask that all customers please copy NYK Line into this access request on syd_impdoc@oc.nykline.com

** Please note that for Late rail requests that the process will require the shipping line to contact the terminal directly and any additional costs applicable for terminal storage, yard moves etc will be passed on to the customer.

To assist Customers we have also provided a copy of the 1-stop Rail Release User Guide to this notification.

Should there be any additional information you require at this time please do not hesitate to contact our team on

1300 883 001

We look forward to your continued support.

Best Regards

NYK Line (Australia) Pty Ltd





Rail Release User Guide

Table of Contents

1	Document Version Control	3
2	Purpose	4
3	System Requirements	4
3.1	Hardware	4
3.2	Operating System.....	4
3.3	Software.....	4
3.4	Communications	4
4	Overview	5
4.1	The Rail Tag and Release Service	5
4.2	Rail Tagging and Release – Business Rules	6
4.2.1	Container Tagging Business Rules.....	6
4.2.2	Container Release Business Rules.....	6
4.3	B2B Message Integration	7
4.4	Access to use the Service	7
5	User Instructions for Web Users.....	7
5.1	How to Log In	8
5.2	How to Search the Message History	9
5.3	How to Tag a Container	10
5.4	How to Release a Container.....	12

1 Document Version Control

Version	Date	Author	Revision Details
Draft	13/06/2006	KJ	First Draft
Draft Update	28/04/2010	MB/TL/DM	Draft update following WR16-183.
1.0	30/04/2010	DM	Added CCD login details

2 Purpose

1-Stop Rail Release Web Portal allows users to submit requests to the terminal that their cargo be moved via Rail, as opposed to Road which is the default.

Prior to the introduction of the Rail 'Tag' and 'Release' service the rail tagging and release process was managed manually by each terminal.

3 System Requirements

3.1 Hardware

- 1GHz CPU and above
- 1GB RAM minimum
- Printer for Report Printing (where required)

3.2 Operating System

- Any with the Web Browser Capability

3.3 Software

- Preferred Internet Explorer Version 7 and above
- Email account for receiving Acknowledgements and E-IDO Responses

3.4 Communications

- Internet Access
- Email SMTP Communications

4 Overview

4.1 The Rail Tag and Release Service

The rail tagging and release service now allows the industry representatives to automatically update the terminal system electronically before the container has discharged the vessel. The industry representatives include:

- The Shipping lines
- Rail Operators
- Freight Forwarders and Imports

The Rail Tagging and Release (RTR) process has been designed to encompass two Sequential Processing Stages being:

Table 4-1 Rail Release Stages

Processing Stage 1 Rail Release - Container Tagging	Processing Stage 2 Rail Release - Container Release
Allows Users (Shipping Lines, Rail Operators, Freight Forwarders or Importers) to tag Containers for Rail and advise the Terminals to move the tagged containers to the Rail Stack upon discharge. The Container Tagging Process must be done before Vessel Discharge. The Rail Tagging of Containers 'Already in the Yard' is allowed only by contacting the Terminal directly, charges may be applied by the Terminal	This is the Container Releasing Stage whereby the Importer/Agent/or Freight Forwarder must enter the Commercial Release Number (E-IDO Pin) against their tagged Containers to affect the final Rail Release Process*

* Please Note that the Container must be tagged and accepted by relevant Terminal before it can be released

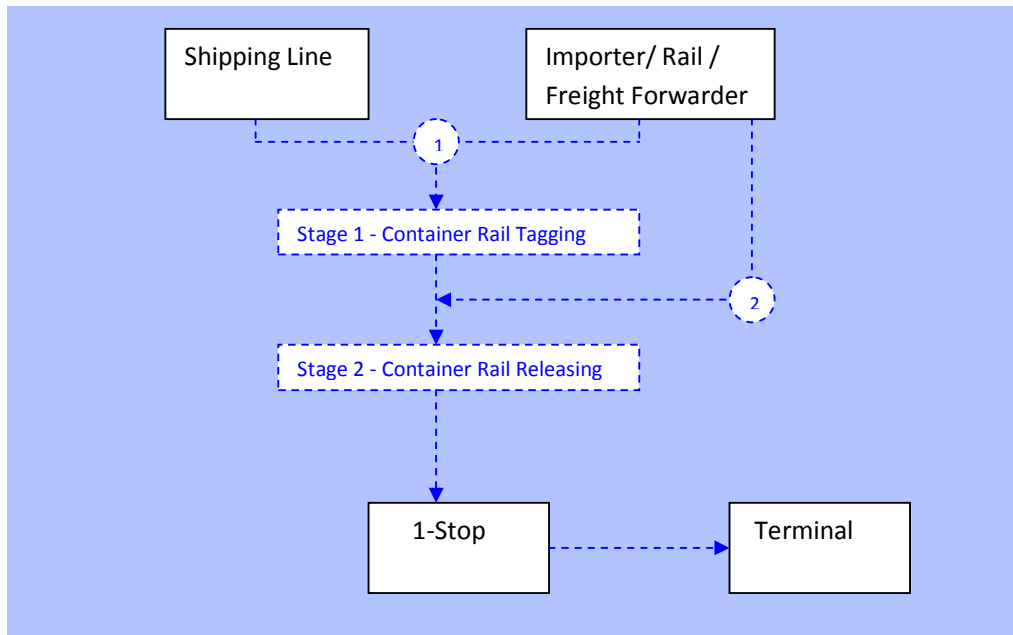


Figure 4-1 Rail Release Process Flow

4.2 Rail Tagging and Release – Business Rules

The high level business rule of the RTR Service requires the industry representative(s) to Tag the container(s) for rail and then release the container(s) via rail. Industry has the option of automating this process through EDI or manually via the 1-Stop website.

The 1-Stop Gateway will be validated against the following Business Rules before passing them to the Terminals;

4.2.1 Container Tagging Business Rules

- **Rule 1** – Check that the Vessel Bay Plan has been received for the Containers for particular Vessel/Voyage.
- **Rule 2** - The Container is not 'in the Yard'. That is it has not been discharged from the Vessel.
- **Rule 3** - Whether the Container has already been tagged and not allowed it to be tagged again by a different User. However, the original User will be allowed to update details of their Tagged Containers and resend to the Terminal or withdraw the Tagged Containers.

4.2.2 Container Release Business Rules

- **Rule 1** – Containers must already been tagged.
- **Rule 2** – A Valid E-IDO must be supplied to affect the Container Release to Rail.

4.3 B2B Message Integration

1-Stop offers users two options to the Rail Tagging and Release service that is either by EDI (EDIFACT or XML) or online via the 1-Stop Website. Please refer to our website for the EDIFACT and XML Message specifications.

4.4 Access to use the Service

Only the following user groups have access to the Rail Tagging and release Service;

- Shipping Lines
- Rail Operators
- Importers / Freight Forwarders / Agents

To gain access to the RTR Service, please contact the 1-Stop Helpdesk via email helpdesk@1-stop.biz or phone (1300 881 055) quoting that you'd like 'Access to the Rail Tagging and Release Service'.

Please prepare the following details before contacting the helpdesk

- Industry type
- Company Name & ABN,
- Employee name & Contact Details
- Approval from the terminal (email is sufficient)

The helpdesk will set-up the required details and will revert with further information. It is the responsibility of the Shipping line, Rail Operator, Freight Forwarder / Agent / Importer to inform the 1-Stop Helpdesk in writing if the employee ceases to be employed by the terminal, so access can be revoked.

5 User Instructions for Web Users

Table 5-1 User Role Access Summary

Type	Description	Tagging Access	Release Access	Message History Access
Non-SL	Non-shipping line users (importers, agents and freight forwarders etc)	Yes	Yes	Yes
SL	Shipping line users	Yes	No	Yes
CTO	Terminal users	No	No	Yes
RO	Rail Operators	Yes	Yes	Yes

5.1 How to Log In

Applies to: Non-SL, SL, CTO, RO

On the 1-Stop web portal (<http://1-stop.biz/>):

1. Enter Username
2. Enter Password
3. Click 'Submit'



Figure 5-1 1Stop Portal Login Page

4. Go to the 'Launch' menu and select 'Rail'

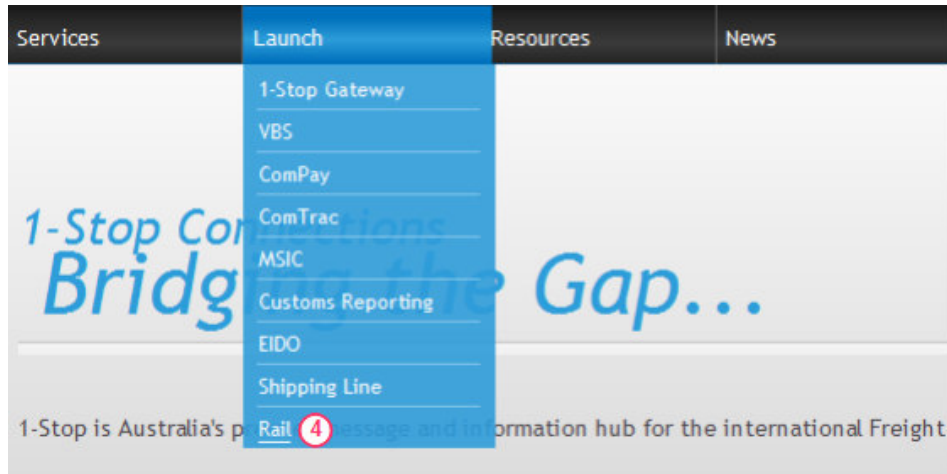


Figure 5-2 Launch Rail Link

5. Click the 'Rail Release' link:



Figure 5-3 Rail Release Link

5.2 How to Search the Message History

Applies to: Non-SL, SL, CTO, RO

After clicking the 'Rail Release' link:

1. Enter search parameters:
 - a. From Date
 - b. To Date
 - c. Vessel Name (optional)
 - d. Departure Terminal (optional)
 - e. Lloyds Number (optional)
 - f. Rail Destination (optional)
 - g. Voyage Number (optional)
 - h. Rail Operator (optional)
 - i. Container Number (optional)
 - j. Departure Date (optional)
 - k. Status (default 'All')
 - l. Message Type (default 'All')
2. Click 'Search'

Figure 5-4 Message History Search Page*

*Note: buttons 4 & 5 are displayed only for certain user roles. See Table 5-1 for details

- Results will be displayed below the input form.

Message Reference Number	Version	Departure Terminal	Rail Destination	Rail Operator	Departure Date	Sender/Organisation	Msg Type	Msg Function	Event Time	Response Email
1STOP000000023	1	PATRICK STEVEDORES - PORT BOTANY	COOTAMUNDA	PPL	2010-04-29 00:00:00	1STOP	Rail Tagging	ORIGINAL	2010-04-28 16:22:03	test@1-stop.biz

Figure 5-5 Example Message History Search Result

- Clicking on the 'Message Reference Number' link will display the details and status of the request

Message Reference Number	Version	Departure Terminal	Rail Destination	Rail Operator	Departure Date	Sender/
1STOP000000023	1	PATRICK STEVEDORES - PORT BOTANY	COOTAMUNDA	PPL	2010-04-29 00:00:00	

Container#	Line	Lloyds	Voyage	Response Time	Status	Response Description
TCKU9389912	MSC	9008603	C1013A			
TCKU9399783	MSC	9008603	C1013A			

Figure 5-6 Message Details and Status

5.3 How to Tag a Container

Applies to: Non-SL, SL, RO

From the 'Rail Release Instructions' page:

- Click the 'Tag New' button
- User is then redirected to the 'Container Tagging' page.



Figure 5-7 Tag New Button

3. Enter container tagging details:
 - a. Departure Terminal
 - b. Rail Destination
 - c. Rail Operator
 - d. Departure Date
 - e. Response Email Address (optional)
 - f. Container Number(s)
4. Terminal response messages will be sent to the 'Response Email Address' if it is present
5. Container numbers must be delimited by a space character or 1 per line
6. Once all required details have been entered click 'Tag'
7. User is then redirected to the 'New Tag' page

Rail Release - Container Tagging - Add New

Departure Terminal *: ② ASLPB : PATRICK STEVEDORES - PORT BOTANY

Rail Destination *: ③ COOTA : COOTAMUNDA

Rail Operator *: ④ PPL : PATRICK PORT LOGISTICS

Requested Departure Date ⑤ 29/04/2010

Response Email Address: ⑥ test@1-stop.biz

Container # * (150 Max): ⑦ TCKU9389912
TCKU9399783

Figure 5-8 Tag Input Form

8. Click 'Refresh Container Status' until the 'Cargo Location' column populates with the current status of the container(s)
9. If the container status is 'On Board Vessel', a checkbox will display in the last column indicating that the container is available for tagging

10. Tick the checkboxes beside the containers that are to be tagged and click 'Submit to Terminal'

Rail Release - Container Tagging Details - New

Departure Terminal: ASLPB : PATRICK STEVEDORES - PORT BOTANY
Rail Destination: COOTA : COOTAMUNDA
Rail Operator: PPL : PATRICK PORT LOGISTICS
Requested Departure Date: 29/04/2010
Response Email Address: test@1-stop.biz

No	Container#	Commodity Code	Line	Lloyds	Voyage	Vessel Name	Custom	AQIS	Cargo Location	Status	Estimated Storage Costs	Select All
1	TCKU9389912	GEN	MSC	9008603	C1013A	MSC AMERICA			On Board Vessel			9 <input checked="" type="checkbox"/>
2	TCKU9399783	GEN	MSC	9008603	C1013A	MSC AMERICA			On Board Vessel			9 <input checked="" type="checkbox"/>

Cancel Refresh Container Status Calculate Storage Costs Submit To Terminal

8
10

Figure 5-9 New Tag Page

11. A popup message will display confirming that the message has been sent to the terminal for approval.

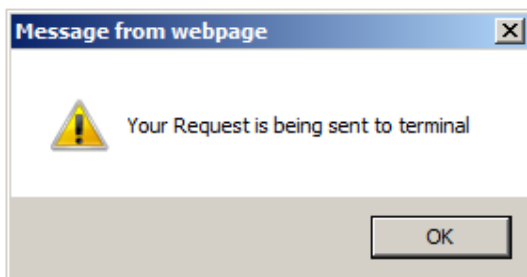


Figure 5-10 Tag Request Confirmation

12. The status of the tag request can be tracked via the 'Rail Release Instructions' page (see Section 5.2)

5.4 How to Release a Container

Applies to: Non-SL, RO

From the 'Rail Release Instructions' page:

1. Search for a tagged container to release (see Section 5.2)
2. Tag requests which have been accepted by the terminal will display a 'Release' Link in the last column

Message Reference Number	Version	Departure Terminal	Rail Destination	Rail Operator	Departure Date	Sender/Organisation	Msg Type	Msg Function	Event Time	Response Email		
1STOP000000023	1	PATRICK STEVEDORES - PORT BOTANY	COOTAMUNDA	PPL	2010-04-29 00:00:00	1STOP	Rail Tagging	ORIGINAL	2010-04-28 16:22:03	test@1-stop.biz		
1STOP000000020	1	PATRICK STEVEDORES - PORT BOTANY	SEATONS - CAMELLIA	MISTM	2010-04-29 00:00:00	1STOP	Rail Tagging	ORIGINAL	2010-04-28 08:45:39		Edit	Release ¹

Figure 5-11 Release Link

3. Clicking the 'Release' link will redirect the user to the Tag Release page.
4. Enter the EIDO PIN in one of two locations:
 - a. Next to each container to be released
 - b. Or into the top field to apply the same PIN to all containers
5. Click 'Refresh Container Status' until the 'Status' column populates with the EIDO PIN status
6. If the EIDO status is 'EIDO PIN IS VALID', a checkbox will display in the last column indicating that the container is available for releasing
7. Tick the checkboxes beside the containers that are to be released and click 'Submit to Terminal'

No	Container#	Commodity Code	Line	Lloyds	Voyage	Vessel Name	Custom	AQIS	Cargo Location	Status	Estimated Storage Costs	E-IDO Pin	Select All
1	MOFU6765810	GEN	MOL	9324863	018S	ANL WARRAIN			On Board Vessel	EIDO PIN IS VALID		test12345	<input checked="" type="checkbox"/>
2	MOTU0523618	GEN	MOL	9324863	018S	ANL WARRAIN			On Board Vessel	INVALID EIDO PIN		test12345	<input type="checkbox"/>
3	MOTU0755151	GEN	MOL	9324863	018S	ANL WARRAIN			On Board Vessel	INVALID EIDO PIN		test12345	<input type="checkbox"/>

Figure 5-12 Tag Release Page

8. A popup message will display confirming that the message has been sent to the terminal for approval (see Figure 5-10)